

SPECIAL EVENTS:

- Art Show, May 3 (p. 6)
- Family Shabbat, May 8 (p. 6)
- MAKE YOUR OWN GOLEM, May 9 (p. 7)

LEARN WITH RABBI BEN

- Hot Topics (p. 5)
- New Views on the Parasha (p. 5)

SHAVUOT

- Tikkun L'eil Shavuot (p. 8)
- Service Schedule, (p. 4)



**BROUGHT TO YOU
BY RABBI BEN**

Rabbi Ben Chaidell

Welcome to spring!

There is a beautiful blessing we say when we see fruit trees blossom for the first time.

בְּרוּךְ אַתָּה ה' אֱלֹהֵינוּ מֶלֶךְ הָעוֹלָם
שֶׁלֹא חָסַר בְּעוֹלָמוֹ כְּלוּם וּבָרָא בּוֹ בְּרִיּוֹת טוֹבוֹת
וְאֵילָנוֹת טוֹבוֹת לְהִנּוֹת בָּהֶם בְּגִי אָדָם.

Blessed are You, Hashem, our God, ruler of the world, who did not leave anything out of God's world, and created in it goodly creations and goodly trees for human beings to take delight in.

I love this blessing because it cultivates gratitude for and mindfulness of the blessings we experience each season through our senses. I love it because it reminds us that a big part of why we are here on this earth is to enjoy life!

Continued on Page 2



TBI NextGen at our Purim Palooza Celebration

PRESIDENT'S MESSAGE

Linda Ungerleider, President

When I contemplate our TBI community, I see connections, I hear joy and I embrace being together with you. TBI is like the JCC as we gather as individuals and families from diverse backgrounds, practices and beliefs in our space for services, learning, Tikkun Olam and fun. Together we are growing!

Watching toddlers learn about Passover or learning a new card game after kiddush or participating in a service or shmoozing at a

Continued on Page 3

Temple Beth Israel

Rabbi: Benjamin Chaidell
Phone: 617-826-9601
Email: rabbiben@tbiwaltham.org
Office Hours: Weds. 9:30- Noon
Weekly Day Off: Tuesday

Officers

President Linda Ungerleider
Vice President: Erika Mackin
Secretary: Phyllis Werlin
Treasurer / Finance: Merrill Griff
Membership Director: Open

Board Members and Committees

Cemetery. Jim Baron
Chesed / Caring: Andrea Baron
Development: Open
Inclusion: Sue Schy
House: Ovidiu Bersan
Program: Denise Dickinson
Ritual: Mark Frydenberg
Social Justice: Sue Schy
At Large: Edie Rosenberg

Temple Office

Office Administrator: Chandar Hall
Phone: 781 894-5146
Email: office@tbiwaltham.org
Office Hours: Mon, Wed, Fri
9:30 am to 12:30 pm

Social Media

Web: tbiwaltham.org
Facebook
facebook.com/tbiwaltham

Here at TBI, we take this lesson seriously! We find many ways to enjoy the delights of each season and its holidays, as well as the community we share and the life milestones we reach together. Singing mazel tov for an 80th birthday or a bat/bar mitzvah anniversary fills me with joy. So do our holiday celebrations.

Thank you to Sue Schy and the amazing team that made our third annual community seder such a joyful time. Thank you to our Kabbalat Shabbat leaders and Shabbat dinner potluck pillars who make our growing monthly first Friday Shabbat a delight. Thank you to our young families gathering May 8 for bringing the joy of little ones learning our songs and traditions!

Thank you to our NextGen and program committee for bringing our community together to enjoy vibrant artwork created by our members and friends at our first annual Art Show and Fundraiser on May 3, and for connecting us to the joy of the Watch City Steampunk Festival on May 9 at our very own make-your-own-golem post-festival event. And lastly, thank you to our Torah teachers and learners who will celebrate the gift of Torah on May 21 on Shavuot.

I want to thank each person who comes for Shabbat, weekday minyan, Torah learning, and to our many programs and events and who volunteers to make them happen. It is because of you that we enjoy our community and our Jewish celebrations. It is because of you we share our blessings through the warming center, donations, and acts of chesed for those who are in need. As we prepare to receive the Torah anew, let us celebrate its lessons and the impact it makes in our community and in the world.

With joy,

Rabbi Ben

President's Message ... Continued from Page 1

Friday night potluck dinner, all recognize you and your interests. What else would you like TBI to offer? A special *todah rabah* to Rabbi Ben for his foresight, guidance and commitment to our future!

Looking forward to a glorious spring. Join us for the Art Auction, services, Oy Another Book! Group, Family Shabbat and lots more!

Hope to see you at TBI soon.

Linda

TEMPLE BETH ISRAEL MEMORIAL PARK



Temple Beth Israel has maintained a cemetery for its members since 1951. Beth Israel Memorial Park is located on South Street, between the Stanley Elementary School and Children's Hospital. Graves are available in Section A (the right side as you enter the cemetery), Section B (the left side as you enter the cemetery) and in Kulanu (the left side, after Section B). The cost to purchase an individual grave in Sections A or B for Temple members is \$2,200 (\$4,400 for two). The cost for non-members is \$3,600 per grave, which includes one year of synagogue membership. You must be a Temple member for two or more consecutive years to take advantage of Member pricing; non-member pricing

applies to all others.

Kulanu is dedicated to serving the needs of Jewish Temple members who are married to a non-Jewish spouse. Graves in the Kulanu interfaith section are sold in lots of two, at a total cost of \$4,400 for members. The cost for non-members is \$7,200 for a lot of two, which includes one year of family membership.

If you are interested in purchasing one or more graves, please contact Jay Trilling of Menorah Cemetery Management Corporation at (857) 636-9440.

COMMIT TO THE BRIT: PARTICIPATE IN TBI SERVICES ON YOUR BAR/BAT MITZVAH ANNIVERSARY!

TBI members are invited to celebrate their bar/bat mitzvah anniversary by chanting Haftorah, reading Torah, receiving an aliya, or delivering a teaching to relive your big day. It's a perfect opportunity to share your skills and/or learn something new as you recommit to Jewish tradition on this milestone with your community. Many also sponsor kiddush with their loved ones on this day.

Contact TBI Member Susan Holbert (susaneholbert@gmail.com) or Rabbi Ben Chaidell (rabbiben@tbiwaltham.org) if you are interested; we will connect you to teachers to assist you in preparing.

SERVICES @ TBI

Friday Nights

Fridays May 1 and June 5

Service and Potluck Shabbat Dinner

6:30 PM Kabbalat Shabbat Service in-person and on Zoom.

7:30 PM Vegetarian Potluck Dinner

Join our growing Friday night community for spirited Kabbalat Shabbat services followed by a delicious dairy/vegetarian potluck feast we will create together.

Sign up for dinner [here](#)

May 8, 15, 22, 29

June 12, 19, 26

Kabbalat Shabbat on Zoom only, at 5:30 pm

Shabbat Morning

Services at 9:30 am followed by Kiddush Lunch

Every Saturday, in person and on Zoom

Morning Minyans

Thursdays, 8:00 am March 5, 12, 19, 26, April 16, 23, 30 On Zoom Only
Sunday, March 29 and April 26 at 9:00 am

Followed by breakfast and Hot Topics Class. In person and on Zoom

Shavuot

TIKKUN LEIL SHAVUOT

Thursday May 21, 7:00 pm to 9:30 pm in-person and on Zoom.

7:00 pm - 8:30 pm Learning Session and Open Beit Midrash

8:30 pm - Maariv (Evening Service),

9:00 PM - Dairy Dessert Refreshments

(See Flyer for Information about Learning Sessions and Facilitators)

SHAVUOT MORNING SERVICES

First Day Friday, May 22, 9:30 AM in-person and on Zoom

followed by Blintzes Brunch

Second Day Saturday, May 23, 9:30 AM in person and on Zoom

Yizkor at about 11:00 am, followed by Kiddush lunch



JOIN SERVICES ON ZOOM

All services at TBI use the same [Zoom link](#).

Enter the Meeting ID: 858 6689 6770 and Passcode: TBIservice

Or Scan the QR code at the left to join on your mobile device.

WELCOME NEW MEMBERS

Welcome to **Ed Kusnitz and Helen Hankin, Sharon and Joe Kalus, and Lindsey Rosen** who are new members of TBI!

LEARN @ TBI

New Views on the Weekly Parasha With Rabbi Ben

LINK TO [JOIN ON ZOOM](#)

Meeting ID: 868 1722 2384

Passcode: 272586

Thursday May 14, 12-1 PM Bamidbar: An Account of Counting

The Book of Numbers begins with a census of the Israelite people. Yet later divine instruction and Jewish law prohibit counting people and refrains from considering human beings fashioned in God's image as merely a number. We'll explore the creative solutions proposed by Jewish law to take censuses and count a minyan, noting the values these teach about our relationships with God and each other.

Thursday June 11, 12-1 PM Shelach: Talking about Tzitzit

This week's Torah portion contains the mitzvah of tzitzit, symbolic fringes on our four-cornered garments reminding us of our relationship with God and one another. We'll explore this "crafty" mitzvah from its origins in the Torah through Jewish history to the present, including the rediscovered blue dye from a Mediterranean snail that gave tzitzit their color!

Hot Topics With Rabbi Ben

Following in-person minyan at 9 AM and breakfast Minyan and class accessible on Zoom

LINK TO [JOIN ON ZOOM](#)

Meeting ID: 858 6689 6770

Passcode: TBIservice

Sunday May 31, 10:30 AM at TBI

Capital Punishment in Jewish Law and Israel

Israel's Knesset (Parliament) recently passed a law establishing the death penalty (for the first time in its history) for acts of terrorism committed against the Israeli state. In this class we will explore Jewish perspectives on capital punishment from the Torah through rabbinic law and the modern state of Israel as we consider arguments for and against this new law.

Sunday June 28, 10:30 AM at TBI

Exploring CJP's New 2025 Greater Boston Jewish Community Study

We will explore emerging trends, demographics, and data from this new study about engagement, belonging, and community in the greater Boston area. We will learn how the Jewish community is changing and discuss how we can meet the needs of current and future generations in our area.

Shabbat After-Lunch Discussions

LINK TO [JOIN ON ZOOM](#)

Meeting ID:

858 6689 6770

Passcode: TBIservice

Saturday May 16, after Kiddush Lunch (approximately 12:45 PM)

God's Pronouns: A Discussion led by Rose Myers

Join Rose Myers to look at how the pronouns we use for God (or their absence) in Jewish texts and prayer can change how we imagine God and our connection to Him/him/Her/her/It/it/Them/them/God/Source of Blessing/Shekinah/Yah The discussion, a continuation of January's look at Jewish Feminism, will focus on the tip of the iceberg of Jewish Feminist Theology.

Saturday, June 6, after Kiddush Lunch (approximately 12:45 PM)

What Does It Mean to be Jewish Today? A Jewish Identity Roundtable

TBI Member Susan Holbert will facilitate a roundtable discussion featuring TBI members and friends from different national, religious, and cultural backgrounds to share their perspectives on Jewish identity in our world.

Learn or Practice Chanting Haftarah!

Learn the musical system for chanting Haftarah from TBI Members Susan Holbert or Lois Rosenthal. Please contact Rabbi Ben (rabbiben@tbiwaltham.org) to indicate interest and get more information.

EVENTS @ TBI

 Temple Beth Israel
Community | Tradition | Inclusion

Come Buy Your Mother Something Nice!

**ART SHOW FUNDRAISER FOR
TEMPLE BETH ISRAEL**

25 HARVARD STREET, WALTHAM, MA

May 3rd, 3-5pm

Silent and live auctions of fun prizes will occur. Small snacks will be provided. Silent auction ends and live auction begins at 4:00pm

Contact Temple Beth Israel in Waltham to RSVP, for more information, or to donate a piece of art
Phone: (781) 894-5146
Email: office@tbiwaltham.org

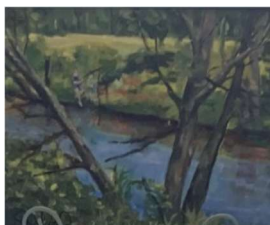


The art show will feature pieces produced by congregants and donated art.

3:00 pm: Noshes and Silent Auction

4:00 pm: Live Auction

Come for the fun and stay to raise funds for Temple Beth Israel.



Family Shabbat: Musical Service and Dinner

Friday, May 8, 2026 5:30 PM

Join TBI families for a short interactive and musical family Shabbat service, followed by dinner together. For location and more information, RSVP by May 5 to rabbiben@tbiwaltham.org or 781-894-5146 to join our growing community.



 Temple Beth Israel
Community | Tradition | Inclusion

Temple Beth Israel
25 Harvard Street | Waltham, MA
tbiwaltham.org 781-894-5146

ROSH CHODESH GROUP

Rosh Chodesh Group for Sivan will meet on May 17 @ 5pm; will discuss Ruth and Naomi. Also, how this is a month of community.

Rosh Chodesh Group for Tamuz will meet on June 21 @ 5pm; Let's discuss the Jewish women involved in the Revolutionary War.

Please bring something to share on the topics. For more information, contact Denise Dickinson (dickinsondr@hotmail.com) or the Temple Office.



EVENTS @ TBI



MAKE YOUR OWN GOLEM

After the Watch City Steampunk Festival, join Temple Beth Israel on the front lawn for:

- **Clay Crafting:** Build your own Golem of Prague.
- **Jewish Heritage:** Taste turn-of-the-century treats.
- **Storytelling:** Hear the legend that inspired Frankenstein.

WHEN: Saturday May 9, 2026. 4:30 to 6:30 pm
WHERE: 25 Harvard St., Waltham, across from Hannaford Supermarket
PARKING: Available in the rear of the Synagogue
WALK: Only 12 minutes from the Common



Temple Beth Israel
Community | Tradition | Inclusion

Temple Beth Israel
25 Harvard Street | Waltham, MA
tbiwaltham.org 781-894-5146

FLAG PLACING FOR VETERANS AT BETH ISRAEL MEMORIAL PARK

Monday, May 11th 9:30 am
Beth Israel Memorial Park

Join the Cemetery Committee, Rabbi Ben, Waltham Veterans Association, Stanley School 5th graders, and the Mayor for our annual flag placing on the veterans' graves.

PRAYERBOOK BURIAL

On **Wednesday, May 27 at 10:30 am**, we will deliver seven boxes of old prayerbooks and sacred texts to the Genizah at the Baker Street Cemetery in West Roxbury. You can support this mitzvah by contributing toward the burial cost of \$18.00 per box. (Genizah Fund). Contact Marilyn Racette or the Temple Office if you'd like to join the group delivering boxes to the Genizah.

Tikkun L'eil Shavuot

*"We Did Not Get Here Alone:
Takes on Teaching Torah Across Time"*

Rachel Rubinstein

*Hebrew College
Rav-Hazzan Student*

Jack Rubinstein

*Jewish Theological
Seminary
Spiritual Care and
Counseling Student*

Benjamin Chaidell

*Rabbi,
Temple Beth Israel
Waltham*



On Shavuot we celebrate God giving us the Torah as a morasha (inheritance). How have Jewish communities across time made Torah their own?

In this open bet midrash (house of study) experience, Rachel, Jack, and Rabbi Ben will lead participants in a self-guided tour of biblical, talmudic, medieval, and contemporary takes on what it means to teach the Torah we received at Sinai. Stay for Ma'ariv, Kiddush, and dairy delights after!

Thursday, May 21, 2026
7:00 pm - 8:30 pm Learning Sessions
8:30 pm - Maariv (Evening Service),
9:00 pm - Dairy Refreshments

Join in-person or use the TBI Services Link to join on Zoom.

Meeting ID: 858 6689 6770 and
Passcode: TBIservice



 **Temple Beth Israel**
Community | Tradition | Inclusion

Temple Beth Israel
25 Harvard Street | Waltham, MA
tbiwaltham.org 781-894-5146

OY! ANOTHER BOOK! The TBI Book Club

Tuesday May 26 and Tuesday June 30 at 7pm

[Join the Book Club on Zoom](#) Meeting ID: 841 4689 6947

Contact Gavriella Edwards Kenziel 35481@yahoo.com for more info.

AROUND TBI

WARMING CENTER

Thank you to our warming center volunteers whom we honored on Shabbat April 18. Special recognition goes to Warming Center Coordinator **Phil Steindel**. You enable us to share our blessings with those in need in our community.

SOCIAL JUSTICE

We continue our commitment to the Community Day Center through donations of needed items to support the unhoused in our community. Requested items include new socks and underwear, spring jackets, sweatshirts and short sleeve jerseys.

Shoes and sneakers are always needed. Donation bin is in our lobby.

CHESED COMMITTEE

Andrea Baron, Chair

Now that the winter is behind us and more of us are getting outside, we would love to see you at the TBI events. If you need assistance getting to services or a program, contact andrea@tbiwaltham.org and we will do our best to match you up with someone attending.

Condolences to:

- Ed Brown and Julie Gagnon on the loss of David Brown, beloved brother/uncle
- Rabbi Tracy Nathan on the loss of her father, Wallace Nathan

Refuah Shleimah to:

- Carol Wilcox Griff

HELP TBI BLOOM: JOIN THE NEW GARDEN CLUB!

Do you have a green thumb—or just love being outdoors? We are forming a TBI Garden Club to help with watering, weeding, and keeping our grounds looking their best.



Whether you're a seasoned gardener or a willing beginner, your help will make a difference. Please get in touch with Catherine Cantrell or the Temple Office for more details!

CANNED SALMON FOR FAMILY TABLE



Jewish Family & Children's Services runs a food bank that supports individuals and families facing food insecurity, and each participating synagogue is

assigned a specific item to help keep supplies steady. Our item is canned salmon - 25 cans each month.

Next time you're at the grocery store, add a couple of cans of salmon to your cart. Drop the cans in the bin when you come to TBI. Mitzvah is complete and no fishing license is required. This is one tangible way we can help make sure there's food on the table for those in our community. Thank you and let's go fishing!

AROUND @ TBI

NOTICE OF ANNUAL MEMBERSHIP MEETING

The Temple Beth Israel Annual Membership meeting will be held on Sunday, June 14, 2026 at 10:00 am. A light breakfast will be served.

The nominating committee presents Joan Kent and Leon Rotenstein as candidates for members at large, and Mark Frydenberg for the office of recording secretary. If you were not included on the committee's slate but wish to run for one of these offices, you may place yourself on the ballot by contacting Merrill Griff, Nominating Committee chair at mdg584@gmail.com or the Temple Office by May 15.

Nominations from the floor cannot be made or accepted during the meeting. All candidates must be finalized by May 15. Only Jewish adult members are eligible to vote. Members may vote in person, via Zoom, or if unable to attend, by sending their choices to the office so they are received before noon on Friday, June 12.

CONGRATULATIONS, HOWARD!



Congratulations to Howard Trachtman on being named the recipient of a Lifetime Achievement Award from the Massachusetts Association for Mental Health (MAMH).

This prestigious honor will be presented on May 21st at the Seaport Hotel in recognition of his tireless advocacy and leadership in the mental health community. Howard's impact spans decades of service, including the MAMH advisory board, he was the co-founder of both the NAMI Greater Boston Peer Support and Advocacy Network (PSAN), the Metro Boston Recovery Learning Community, the Board President of the Warmline Advisory Group, Inc. and dedicated 14 years to the Board of Directors for NAMI Massachusetts. Howard is also leading the NAMI Walk on May 16th at the Boston Common. Contact Howard at hdt@namiboston.org for more information about these events.

TBI BOOKSHELF with Marilyn Racette



Sadie and Ori are walking with their grandpa when Sadie notices the bright full moon, and wonders what holiday it might portend.

At Hebrew school she has learned that our holidays often begin with a full moon. This is the beginning of Sadie's Lag Ba'Omer Mystery, written by Jamie Korngold and illustrated by Julie Fortenberry. Do you know the story behind this holiday? Read the book with your favorite young person to find out why we celebrate. A bonfire? A Picnic? Sounds like fun!

JF&CS FRIENDLY VISITOR PROGRAM FOR ISOLATED OLDER ADULTS

In response to increasing isolation among older adults, Jewish Family & Children's Service (JF&CS) is expanding its Friendly Visitor Program in the Greater Boston area. Friendly visitors meet regularly with isolated older adults, helping to build ongoing, meaningful Jewish connections. We are seeking both older adults who would welcome regular companionship and temple members interested in serving as trained friendly visitors. To volunteer or request a friendly visitor, contact Renee Marcus Hodin rmhodin@jfcsboston.org. For more information, search for the [JF&CS Friendly Visitor Program](#) online or scan the code.



Yahrzeits

We remember those whose Yahrzeits fall during the coming weeks. May their memories be a source of blessing.

- May 01** June Tatelman (*Wife of Eliot Tatelman*)
- May 02** Fannie Kennen (*Grandmother of Anita Kennen*)
- May 04** Freda Griff (*Remembered by Merrill Griff*)
- May 06** Angela Fox (*Soulmate of Gavriella Edwards*)
- May 06** Helen Keaney (*Mother of Esther Keaney*)
- May 08** Lori Ann Roe (*Remembered by Zach Roe*)
- May 08** Sophie Trager (*Remembered by Bruce Trager*)
- May 09** Lillian Etkind (*Mother of Stephen Etkind*)
- May 11** Sadie Glanz (*Aunt of Sue Schy*)
- May 14** Henry M. Roe (*Remembered by Zach Roe*)
- May 18** Jack Bloom (*Remembered by Miriam Chernoff*)
- May 20** Ruth Schild (*Wife of Willy Schild*)
- May 21** Bella Kovitz (*Grandmother of Alan Dechter*)
- May 23** Jack Trager (*Remembered by Bruce Trager*)
- May 24** Carl Goldstein (*Father of Stanley Goldstein*)
- May 24** Myron Stanton (*Father of Jill Stanton*)
- May 26** Grete Araten (*Grandmother of Marilyn Racette*)
- May 29** Dorothy Dechter (*Mother of Alan Dechter*)
- May 29** Beatrice Hobbs (*Mother of Sylvia Hobbs*)
- May 31** Ida Ullman (*Remembered by Miriam Chernoff*)
- May 31** Irene Zieff (*Remembered by Steven Zieff*)

- Jun 01** Matthew Israel Radnofsky (*Remembered by Ken Radnofsky*)
- Jun 01** Steven Siegel (*Remembered by Barbara Camann*)
- Jun 02** Lillian Levine (*Mother of Alan Levine*)

- Jun 03** Bernie Frydenberg (*Father of Mark Frydenberg*)
- Jun 03** Sheila L. Reback (*Remembered by Howard Trachtman*)
- Jun 07** Seymour Bigman (*Father of Arna Margolies*)
- Jun 08** Philip Leibovich (*Remembered by Joan Leibovich*)
- Jun 08** George Mikelbank (*Remembered by Martin Taubman*)
- Jun 13** Elsbeth Deser (*Mother of Abigail Deser*)
- Jun 15** Gertrude Riseberg (*Grandmother of Nancy Borr*)
- Jun 17** Barbara Griff Kappitt (*Remembered by Merrill Griff*)
- Jun 18** Liliya Tyutyunik (*Mother of Michael Tyutyunik*)
- Jun 19** Rudy (*Father of Susan Rubenstein*)
- Jun 20** Ralph Gardner (*Father of Marion Saxe*)
- Jun 21** Milton Rothman (*Remembered by Amy Rothman*)
- Jun 21** Samuel Weinstein (*Father of Ellen Zane*)
- Jun 21** Manya Webb (*Remembered by Julian Webb*)
- Jun 23** Harry Baker (*Father of Eleanor Baker*)
- Jun 24** Harry Marion (*Father of Arthur Marion z"l, Father-in-Law of Marjorie Marion z"l*)
- Jun 25** Alex Greenbaum (*Remembered by Ben Nudelman*)
- Jun 26** Sheila Singer (*Remembered by Natasha Singer*)
- Jun 26** Manehan Snyder (*Remembered by Carol Snyder Halberstadt*)
- Jun 28** Toby Kaplan (*Mother of Kim Margolis*)
- Jun 29** Benjamin Cohen (*Husband of Erika Cohen*)
- Jun 29** Louise Goldman (*Mother of Alan Goldman*)
- Jun 29** Mark Levine (*Husband of Dianne Levine*)

TBI welcomes contributions in memory of your loved ones. Please sponsor a Kiddush lunch or donate to one of the funds listed on page 12.

DONATIONS

Kiddush Sponsors

- Evelyn Dickson
- Diana Korzenik
- Susan and Sidney Rubenstein
in memory of James
Rubenstein
- Dana and John Fine
- Hadassah kiddush
- Ed Brown

Passover Seder Donations

- Anonymous
- Peter Bronk and family
- Sidney and Susan Rubenstein
- Dianne Levine
- Diana Korzenik
- Miriam Chernoff
- Theodore Clayman
- Joel Chaiken and
Sue Ellen Dodell
- Peggy Moses

General Fund

- Melvin Welinsky
- Sidney and Susan Rubenstein
- Judith Mutono
- Erika Cohen
- Event Participation Fund**
- Diana Korzenik
- Rabbi's Discretionary Fund**
- Audrey and Steven Kennen
- Evelyn Dickson
- Liz Norfleet



Temple Beth Israel
25 Harvard Street
Waltham, MA 02453

Help us save on postage!

Pick up your copy of Temple Talk at the synagogue or read it online at www.tbiwaltham.org.

DONATE TO TEMPLE BETH ISRAEL

Your generosity helps to sustain our vibrant community. Please consider donating to one of our funds, whether in honor of a special occasion, in memory of a loved one, or simply to support our programs.

Available Funds:

- General Fund
- Mark Frydenberg Event Participation Fund
- TBI Community Outreach
- Warming Center Fund
- Rabbi's Discretionary Fund
- High Holiday Fund
- Kiddush Lunch Fund (*Minimum \$200*)
- Genizah Fund
- Family Programming Fund

Please specify the fund, amount, and whether your gift is in honor or in memory of someone. If you'd like us to notify the honoree or family, please include their contact information. Please **donate online** at tbiwaltham.org or **send your check** to the Temple office.

WELCOME CHANDAR ("DAR") HALL!



Chandar ("Dar") Hall joins TBI as our new office administrator starting in May. She comes to us from the Jewish Communities of Vermont, where she was the social media coordinator and office manager. She is also a crochet artist. You can email her at office@tbiwaltham.org.

Watch opportunities to meet Dar during her office hours and other events in May and June.